



MIPOLAM ACCORD

gerflor.com



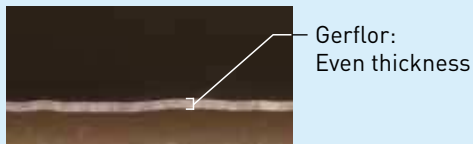
Gerflor[®]
theflooringgroup

evercare™ SURFACE TREATMENT

EXCLUSIVE PATENTED TECHNOLOGY BY GERFLOR

THE BEST CHEMICAL STAIN RESISTANCE SURFACE TREATMENT

evercare™ BY GERFLOR : Treatment durability



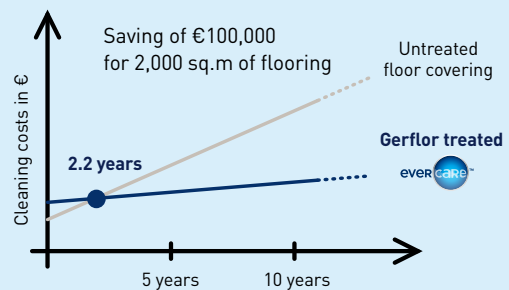
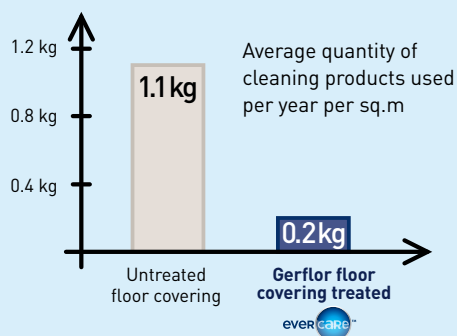
Other treated floor covering



SIMPLE & EASY STAIN REMOVAL



EASY AND COST EFFECTIVE MAINTENANCE



USER'S BENEFITS

- | Easy & cost-effective maintenance
- | No wax for life
- | Stain barrier
- | Chemical resistance

MIPOLAM ACCORD

Performances and benefits



Homogeneous vinyl flooring suitable for heavy duty traffic areas



Semi-directional design available in 28 references



Available in 2m sheet (also available in tiles 608 x 608 mm on demand)



Excellent abrasion resistance



Matt finish surface: enhanced design & colour, long lasting appearance



Highly flexible homogeneous flooring, easy to install & weld

Don't forget our complementary ranges!



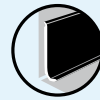
Handrails



Wall Coverings & Protections



Entrance mats



Skirtings & Profiles

FEWER VOC'S, BETTER INDOOR AIR QUALITY



INDOOR AIR QUALITY

- TVOC emissions 100 times lower than norm requirements (TVOC < 10 µg/m³ after 28 days)
- Floorscore certified
- M1 certified
- Comply with AgBB protocol
- No formaldehyde emission



COMPOSITION

100% REACH compliant

- FREE of formaldehyde
- FREE of heavy metals
- FREE of solvent



RECYCLABILITY

- 100% recyclable product



RECYCLED CONTENT

- 25% recycled content
- 100% REACH compliant recycled content



LCA

- Eco-designed according to a product specific Life Cycle Analysis
- Product specific EPD (Environmental Products Declaration) available
- Manufactured in an Iso 14001 and Iso 50001 certified site
- Contribution to many Green Building Schemes (LEED, HQE, BREEAM...)
- Patented surface treatment Evercare™ to reduce drastically the use of chemical products and water and ensure the lowest environmental impact



WELLNESS

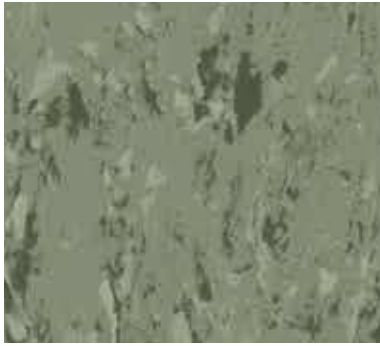
Health

- Antibacterial activity (inhibits growth > 99%)

Comfort

- Walking comfort < 75 dB

MIPOLAM ACCORD



0457 Como
NCS:5010-G30Y / LRV: 23,2



0332 Dore
NCS: 1030-Y20R / LRV: 56,8



0315 Orange River
NCS: 2570-Y50R / LRV: 19,2



0448 Bandak
NCS: 5030-R / LRV: 10,1



0447 Grunsee
NCS: 1040-G50Y / LRV: 48,8





0303 Manitoba
NCS: 1005-Y40R / LRV: 68,8



0305 Light Sand
NCS: 1505-Y20R / LRV: 64



0301 Louise
NCS: 1005-Y30R / LRV: 64,4



0324 Sand
NCS: 2010-Y20R / LRV: 52,1



0441 Loch Ness
NCS: 3005-Y20R / LRV: 42



0443 Krumme
NCS: 4010-G90Y / LRV: 25,1



0425 Cork
NCS: 3030-Y30R / LRV: 32,4



0463 Bourget
NCS: 5005-Y50R / LRV: 24,9



0445 Otto
NCS: 7005-Y50R / LRV: 9,4

MIPOLAM ACCORD



0321 Salt
NCS: 1500-N / LRV: 67,1



0320 Ontario
NCS: 4502-B / LRV: 33,1



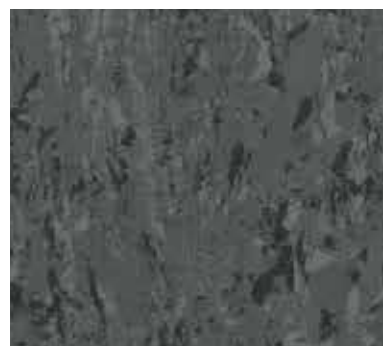
0450 Thames
NCS: 5010-B10G / LRV: 19,9



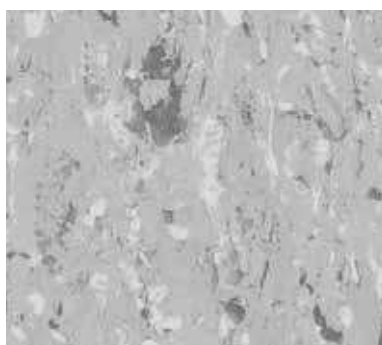
0312 Powell
NCS: 2000-N / LRV: 56,3



0310 Huron
NCS: 3005-R80B / LRV: 46,3



0459 Mississippi
NCS: 7000-N / LRV: 10,8



0319 Toba
NCS: 2502-G / LRV: 43



0330 Kruger
NCS: 5000-N / LRV: 26,8



0360 Balaton
NCS: 8500-N / LRV: 6,7



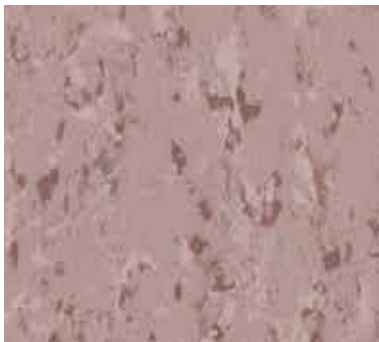
0306 Inari
NCS: 1515-R90B / LRV: 53,6



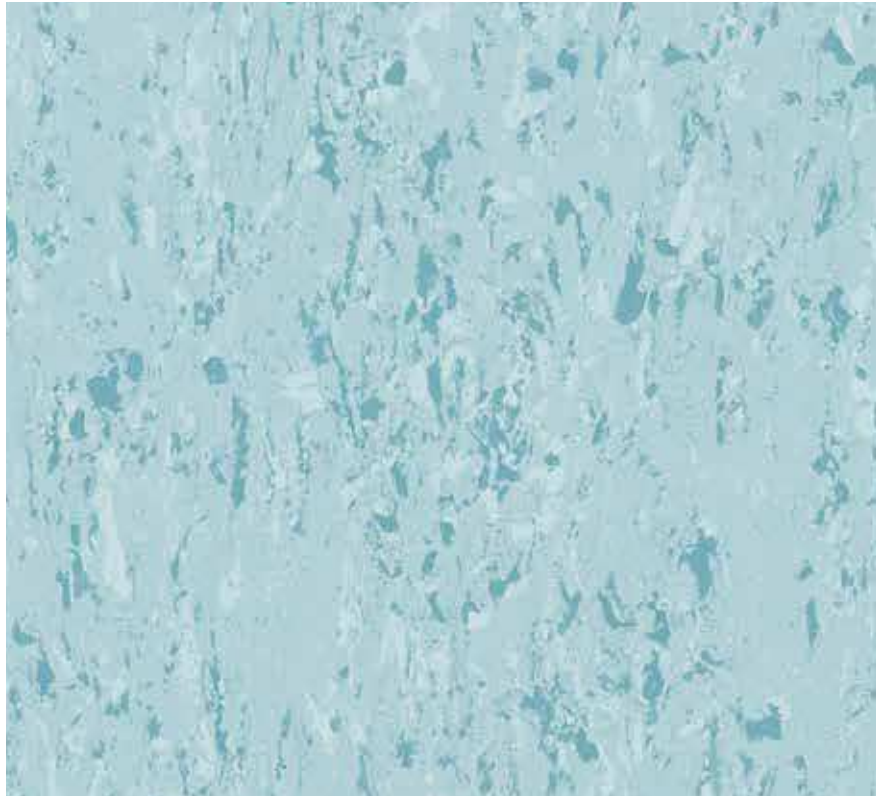
0316 Malaren
NCS: 3020-R90B / LRV: 31,9



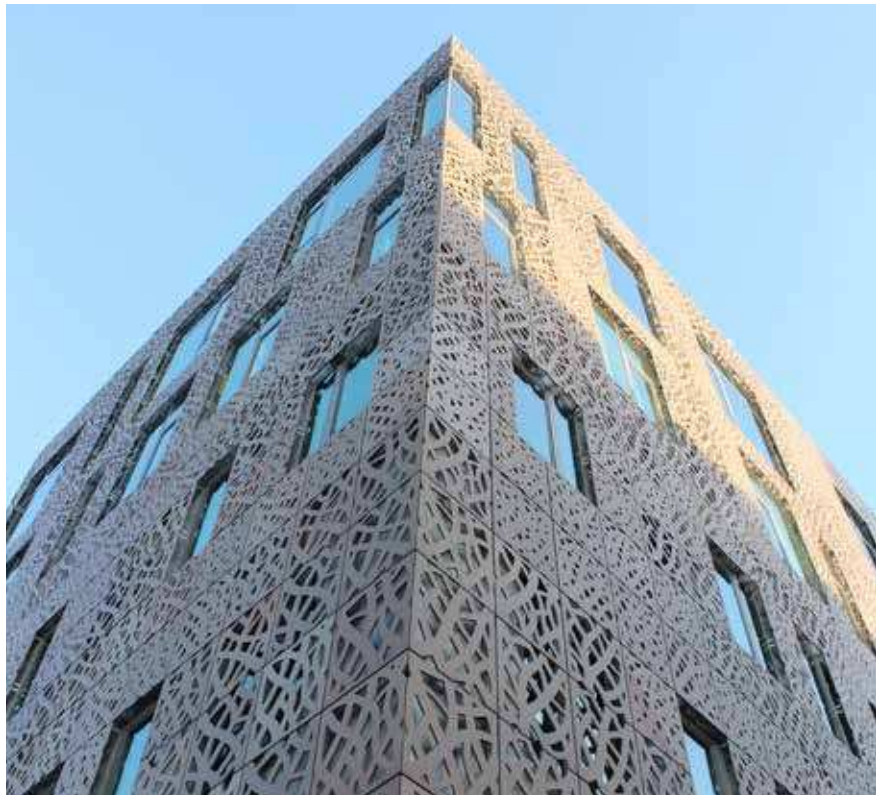
0346 Roxen
NCS: 4040-R90B / LRV: 16,1



0437 Flamingo Resort
NCS: 3010-R / LRV: 30,7



0417 Constance
NCS: 2020-B30G / LRV: 51,5



Mipolam Accord

DESCRIPTION

Total thickness	EN ISO 24346 (EN 428)	mm	2.00
Weight	EN ISO 23997 (EN 430)	g/sq.m	2850
Width/length of sheet	EN ISO 24341 (EN 426)	cm/lm	200/20
Tile size	EN ISO 24342 (EN 427)	mm	608 x 608 ⁽¹⁾
Number of tiles per package	-	-	20

CLASSIFICATION

Norm/product specification	-	-	EN ISO 10581 (EN 649)
European classification	EN ISO 10874 (EN 685)	class	34-43
Fire rating	EN 13501-1	class	Bfl - s1
Static electrical propensity	EN 1815	kV	< 2

PERFORMANCE

Wear resistance	EN 660.2	mm ³	≤ 2.0
Wear group	NF 189	group	T
Type binder content	ISO 10581	type	I
Dimensional stability	EN ISO 23999 (EN 434)	%	Sheet ≤ 0.40 - Tile ≤ 0.25
Residual indentation	EN ISO 24343-1 (EN 433)	mm	≈ 0.02
Castor chair test (type W)	ISO 4918 (EN 425)	-	OK
Thermal conductivity	EN ISO 10456 (EN12524)	W/(m.K)	0.25
Colour fastness	EN 20 105 - B02	degree	≥ 6
Surface treatment	-	-	Evercare™
Chemical resistance	EN ISO 26987 (EN 423)	class	OK
Anti-bacterial activity [E. coli - S. aureus - MRSA] ⁽²⁾	ISO 22196	-	> 99 % inhibits growth

ENVIRONMENT / INDOOR AIR QUALITY

TVOC after 28 days	ISO 16000-6	µg/m ³	< 10
Certification	-	-	Floorscore™

CE marking

CE	EN 14041	-	
		-	

(1) Products available in tiles for a minimum quantity order of 500 sq.m
 (2) The implementation of an effective cleaning method is the best defence against infection

Installation and Maintenance Guidelines, Complementary ranges available on our Gerflor website.

Rubber leaves indelible stains on vinyl floorings: do not use mats with rubber backing and replace tubular furniture feet with those made of PVC or polyamide. Place mats of sufficient length at entrances to reduce outside sources of dirt.

IMPORTANT: The information contained in this document is valid from 30/04/2017 and is subject to change at any time without notice. In the context of constantly changing technology, our customers are responsible, prior to any use, for checking with us that this document is the version in force.

Product description and technical data sheet available in various languages. See our Gerflor Country websites.

MIPOLAM ACCORD, LESS SPEAKING FOR MORE ACTIONS

 COMPOSITION 100% REACH compliant	 INDOOR AIR QUALITY 100 times lower than norm requirements (TVOC < 10 µg/m ³ after 28 days)	 RECYCLED CONTENT 25%	 RECYCLABILITY 100%	 LCA Eco-designed according to a product specific life cycle analysis	 WELLNESS Walking comfort < 75 dB
--	---	------------------------------------	----------------------------------	--	--

Be CONNECTED!



www.gerflor.com